



# Apéro

*An efficient multipurpose unit with a streamlined design that suits any decor and any room. Flexible enough to fit the den or the bedroom, the kitchen or the playroom, the solarium or the basement.*

**\* Gentle, even heat; completely silent operation**

*X-shaped monoblock element (convection); manual reset overheat protection.*

**\* Proven economical comfort**

*Built-in electronic proportional action thermostat can save you up to 30% on your heating bill; ultra-sensitive to 1/5°F (1/10°C).*

**\* Full control over all features**

*Heating indicator light; temperature setting dial (can be locked).*

**\* Efficient, reliable and safe**

*Front-louvered air outlet that directs heat towards the center of the room; automatic power shut-off in case of overheating; steel construction with polyester/epoxy anti-rust coating.*

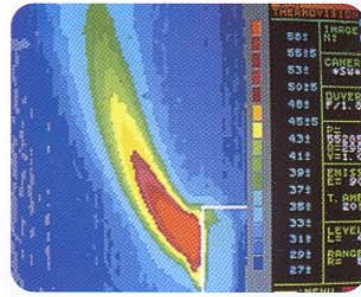
**\* Easy to install**

*Quick-mount surface installation (snap-on bracket, plug-in cord); two convenient sizes: 500 or 1250 W.*

Model	Catalogue No.	Color	Power	Height	Width	Depth
			120V	in.	in.	in.
APÉRO	7358-B05	WHITE	500 W	17 <sup>1</sup> / <sub>2</sub>	13 <sup>3</sup> / <sub>8</sub>	4
	7358-B12	WHITE	1250 W	17 <sup>1</sup> / <sub>2</sub>	26	4

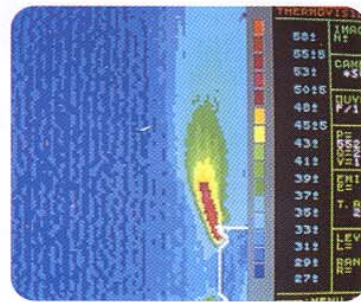
CSA- and UL-listed

## The Apéro convection heater— more efficient natural convection



*Warm air is directed forward to heat the room, not the wall. The result? The warm air mixes more quickly with ambient air, and the temperature is more even throughout the room.*

## Conventional electric heating— needlessly higher energy consumption



*Fan-forced and base-board heating is inefficient since the hot air is distributed vertically and accumulates below the ceiling (cushion effect). This results in heat losses through the wall on which the heater is mounted and through any adjacent windows.*

*Convectair offers solutions adapted to each client's specific needs, be they supplementary heating, home renovations and additions or complete home heating systems. Energy-efficient Convectair systems are available in a wide range of designs and power ratings, in 120 or 240 volts.*



### WARRANTY

**Two years against all defects  
Five years on the heating element**